



US 20110013016A1

(19) **United States**(12) **Patent Application Publication**
Tillotson(10) **Pub. No.: US 2011/0013016 A1**(43) **Pub. Date: Jan. 20, 2011**(54) **VISUAL DETECTION OF CLEAR AIR
TURBULENCE**(75) Inventor: **Brian J. Tillotson, Kent, WA (US)**

Correspondence Address:

Thompson Hine LLP**10 West 2nd Street, 2000 Courthouse Plaza, NE
Dayton, OH 45402-1758 (US)**(73) Assignee: **The Boeing Company, Chicago, IL
(US)**(21) Appl. No.: **12/505,182**(22) Filed: **Jul. 17, 2009****Publication Classification**(51) **Int. Cl.****H04N 7/18** (2006.01)**G08B 23/00** (2006.01)(52) **U.S. Cl. 348/135; 340/963; 348/E07.085**(57) **ABSTRACT**

Presented is a system and method for detecting clear air turbulence comprising an image capturing element, a lens having focal length adapted to focus a scene onto the image capturing element such that the combination of the lens and array of pixels are capable of optically resolving any visual distortions of features in the scene that are caused by turbulent air, and a processor. The processor compares the image with a subsequent image, or a stored image of the scene, to detect a change in refraction of light received from the feature in the scene that is due to turbulence and produces an indication of the area of turbulence in the scene.

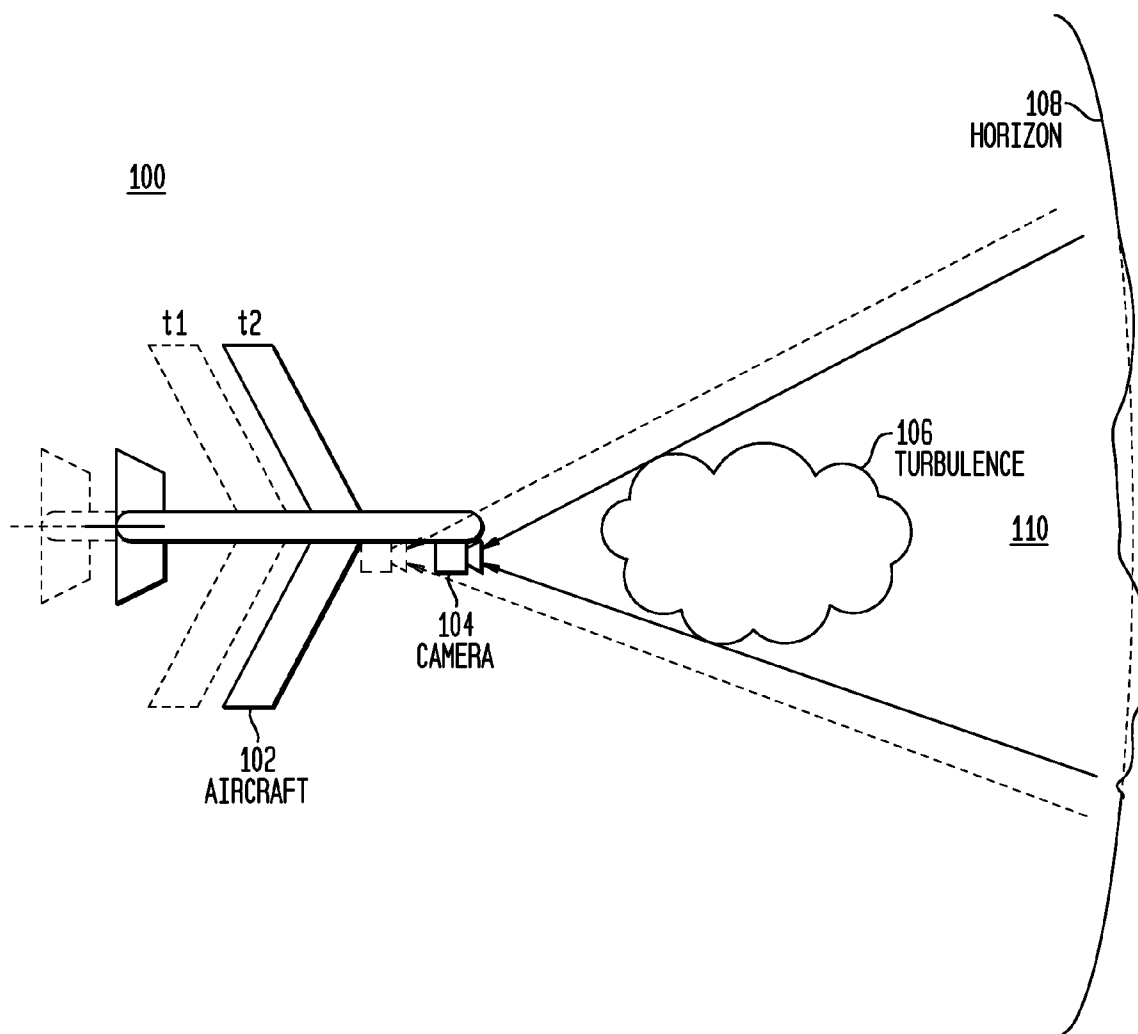


FIG. 1

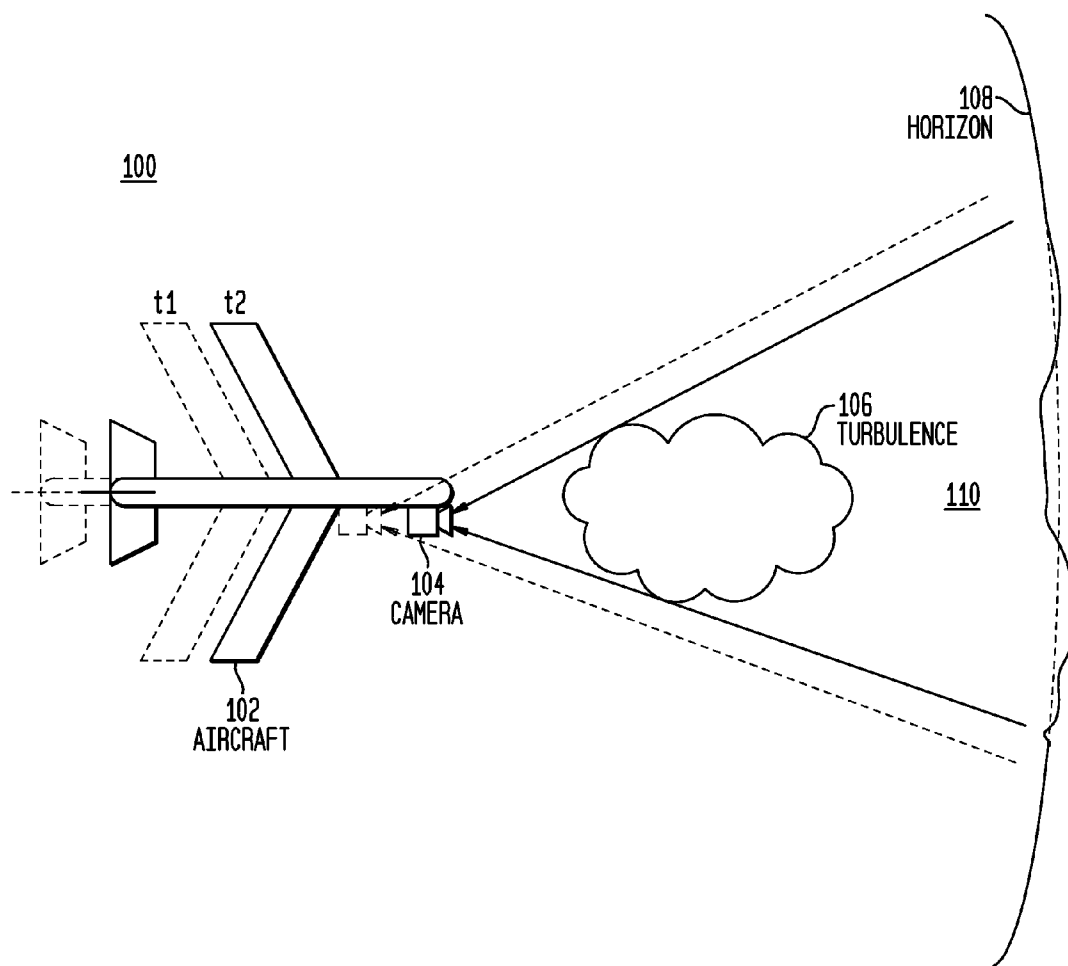


FIG. 2

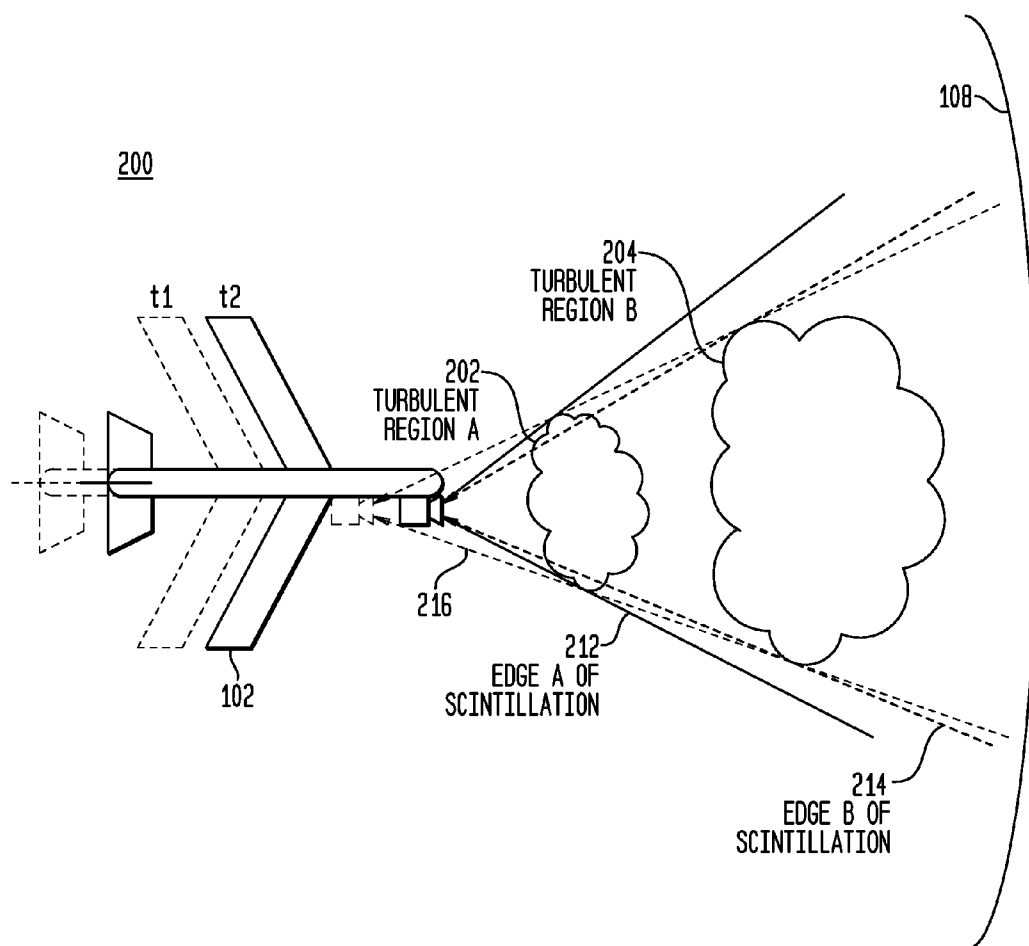


FIG. 3

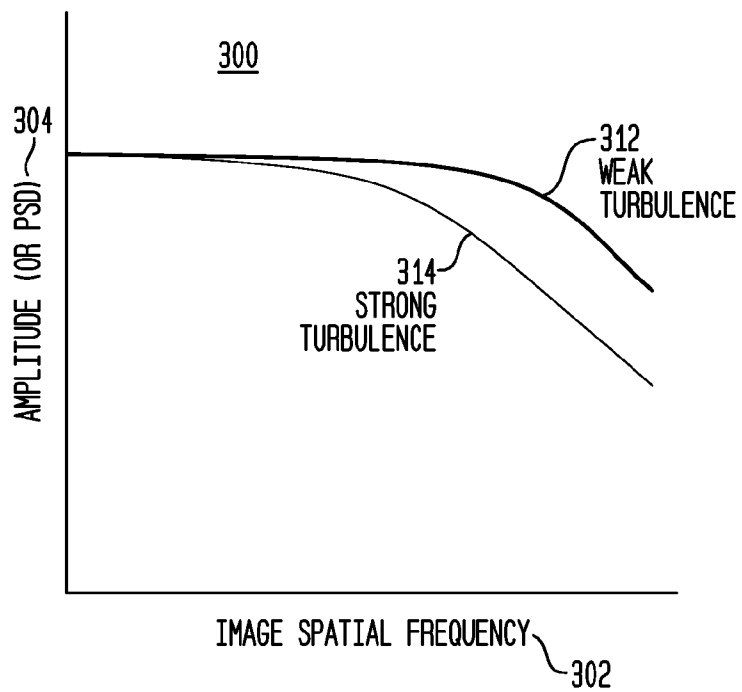


FIG. 4

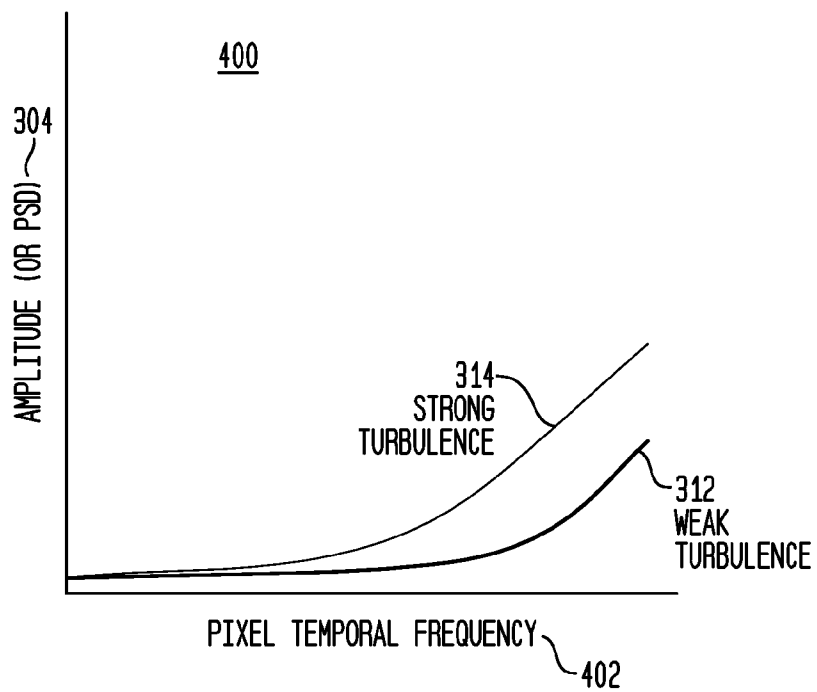
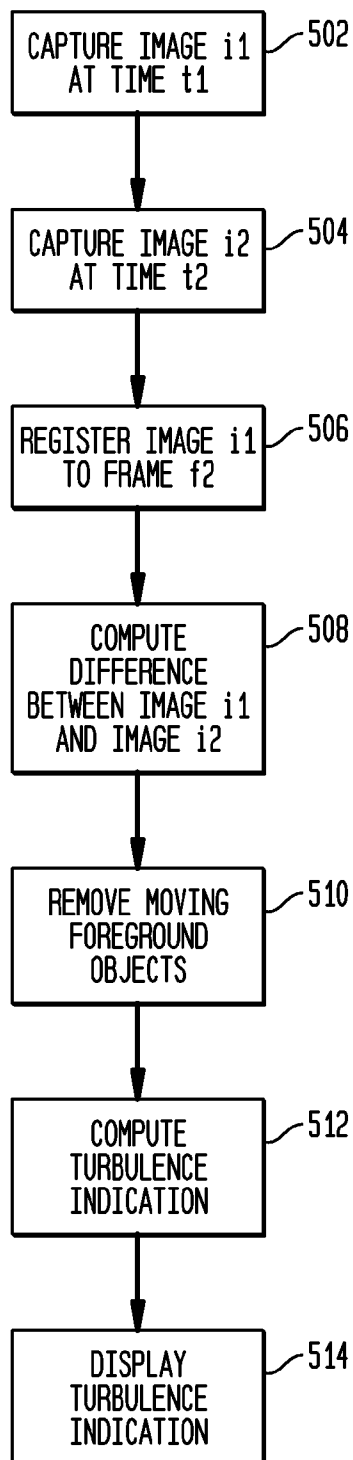
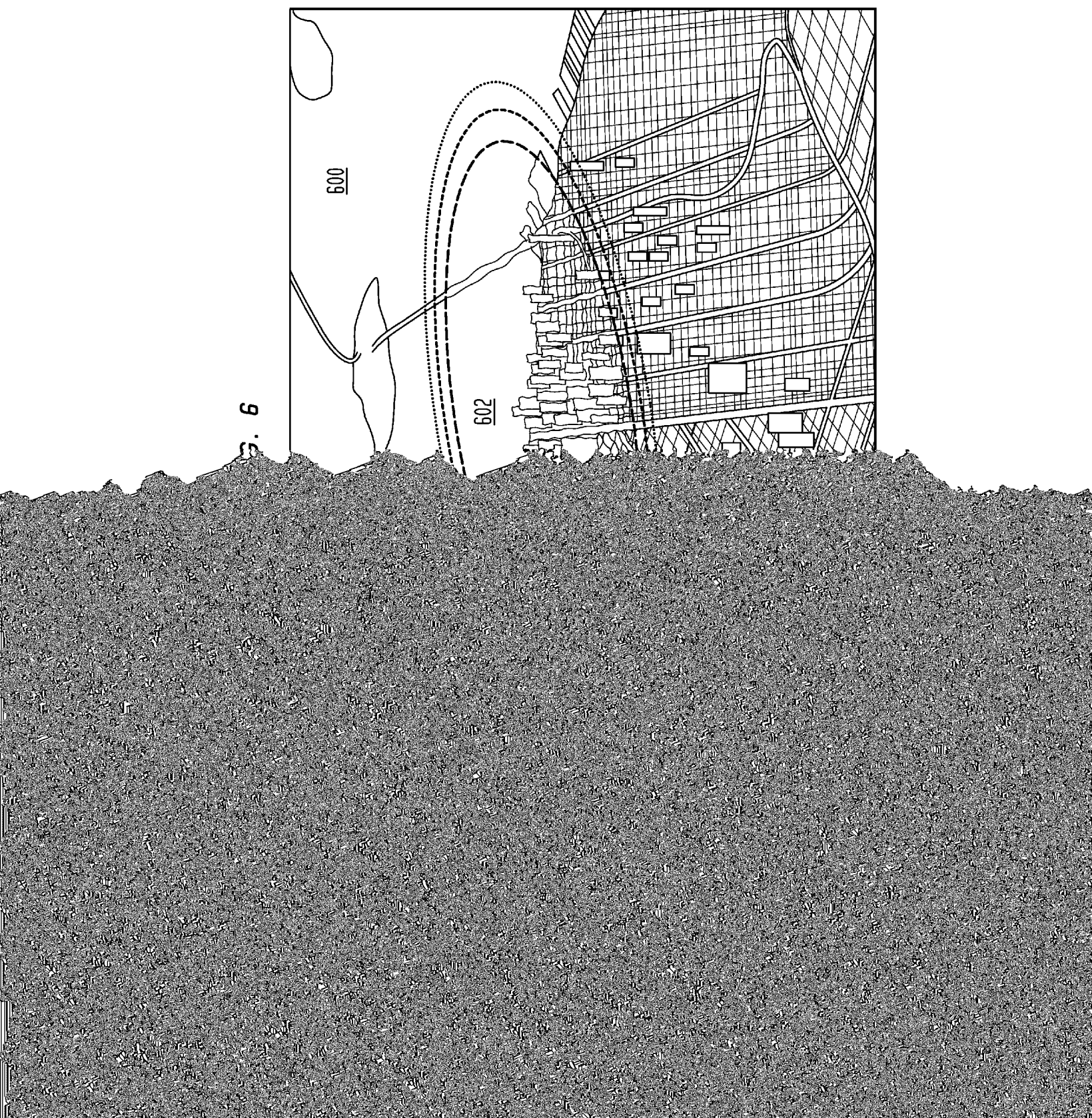


FIG. 5500



VISUAL DETECTION OF CLEAR AIR TURBULENCE

FIELD

[0001] Embodiments of the subject matter described herein relate generally to a method for estimating the magnitude and distance of turbulent pockets of air.

BACKGROUND

[0002] Airplane encounters with clear air turbulence at cruise altitude may produce serious injury. Clear air turbulence is difficult to forecast and even more difficult to detect with current methods. Clear air turbulence is turbulence that results where there are no clouds, precipitation, or visible particles such as dust in the air.

SUMMARY

[0003] Presented is a method and system for detecting clear air turbulence using a camera and associated software. The method and system detects small fluctuations in a visual scene that are caused by turbulence in the atmosphere, and measures the characteristics of these fluctuations to estimate the magnitude of the turbulence and the distance to the turbulence. The method and system reports an indication of the estimate of the turbulence to pilots of aircraft, allowing them to maneuver their aircraft to avoid the turbulence.

[0004] The features, functions, and advantages discussed can be achieved independently in various embodiments of the present invention or may be combined in yet other embodiments further details of which can be seen with reference to the following description and drawings.

BRIEF DESCRIPTION OF THE DRAWINGS

[0005] The accompanying figures depict various embodiments of the system and method of visual detection of clear air turbulence. A brief description of each figure is provided below. Elements with the same reference number in each figure indicated identical or functionally similar elements. Additionally, the left-most digit(s) of a reference number indicate the drawing in which the reference number first appears.

[0006] FIG. 1 is a diagram of an airplane detecting a patch of turbulence by analyzing distortions to the horizon in one embodiment of the clear air turbulence system and method;

[0007] FIG. 2 is a diagram illustrating how to detect the range to, and size of, a patch of turbulence by analyzing the angular rate of change of a patch of scintillation in one embodiment of the clear air turbulence system and method;

[0008] FIG. 3 is a graph illustrating the decrease in high frequency spectral content of an image due to the blurring of background features caused by refraction through different densities of turbulent air in one embodiment of the clear air turbulence system and method;

[0009] FIG. 4 is a graph illustrating the increase in high frequency spatial content of a scene as measured across multiple successive images due to movement and scintillation of background features in successive images due to dynamic changes in refraction cause by changing densities in turbulent air in one embodiment of the clear air turbulence system and method;

[0010] FIG. 5 is a flow chart illustrated process steps in one embodiment of the clear air turbulence system and method; and

[0011] FIG. 6 in an exemplary screen shot of a background image overlaid with a graphic showing isobars representing turbulence in one embodiment of the clear air turbulence system and method.

DETAILED DESCRIPTION

[0012] The following detailed description is merely illustrative in nature and is not intended to limit the embodiments of the invention or the application and uses of such embodiments. Furthermore, there is no intention to be bound by any expressed or implied theory presented in the preceding technical field, background, brief summary or the following detailed description.

[0013] Clear air turbulence is difficult to forecast and even more difficult to detect using current methods. Clear air turbulence is turbulence that results where there are no clouds, precipitation, or visible particles such as dust in the air. Pilots may learn of clear air turbulence from forecasts and other pilots that have recently flown through a pocket of turbulence. Generally, pilots turn on a "seat belt required" light and/or slow their aircraft's speed in anticipation of passing through suspected pockets of turbulence to reduce structural stresses on the aircraft and reduce discomfort to passengers. However, if the pilot is unaware of turbulence, the pilot may have little warning time to alert the passengers or otherwise change the configuration and velocity the aircraft.

[0014] A clear air turbulence system detects turbulence in the atmosphere and enables pilots maneuver their aircraft to avoid any turbulent pockets of air. In one embodiment, the clear air turbulence system warns the pilot of turbulence in the path of the aircraft. In another embodiment, the clear air turbulence system provides a visual navigational aid to enable a pilot to navigate around pockets of turbulent air. The clear air turbulence system may improve air safety, allowing airplanes to fly at cruise speeds with a reduced risk of running into unexpected turbulence that could damage the airplane or harm passengers. The clear air turbulence system also may increase the comfort of passengers in the airplane by allowing the pilot to navigate around pockets of turbulence or, if the turbulence is widespread, by allowing the pilot to slow the airplane and navigate through the least turbulence areas of the sky. Further, reducing the amount of turbulence that an airplane flies through over the airplane's useful life may also reduce the stresses on airframe and engine components that accrue during a lifetime of continuous operation. This will reduce component fatigue, permit safer long term operation of the aircraft, and reduce or shorten necessary maintenance cycles.

System Components and Operation

[0015] Referring now to FIG. 1, the clear air turbulence system 100 comprises one or more cameras 104 mounted on or to an aircraft 102, and a computer for analyzing images from the cameras 104. The computer can be any suitable system capable of processing images, including but not limited to a PC or a customize circuitboard having a processor. The camera 104 is linked to the computer which receives the image from the camera 104. In an embodiment, the camera 104 uses a telephoto lens. In operation, the camera 104 is pointed approximately at the horizon 108, or an object having sufficient known detail, and a series of images or video is delivered to the computer. The camera 104 outputs digitized data of the image to the computer. In another embodiment, the

computer digitizes an analog input from the camera **104** into digital images using a digital frame grabber.

[0016] Light returning to the camera **104** from the horizon **108** that passes through a pocket of turbulence **106** will be refracted differently than light passing through the rest of the sky. The difference in refraction is due to differences in humidity levels, temperatures, and/or pressures between the pocket of turbulence **106** and the surrounding ambient air. As a result of the difference in refraction, there will be distorted portions **110** of the horizon **108** where the horizon **108** appears shifted spatially and blurred.

[0017] Typically, the refractive bending of light by natural turbulence is usually less than 100 microradians and may therefore be too small to be detected by many cameras **104** using normal snapshot lenses. Therefore the camera **104** in the clear air turbulence system **100** uses a telephoto lens having a long focal length that magnifies the image and provides a suitable resolution for imaging by the camera **104**. In an embodiment, the telephoto lens and the pixel resolution of the image capturing element, for example a CCD chip, are adapted to optically resolve at least 10 microradians of angle. For example, a telephoto lens having a 1-meter focal length can optically resolve approximately 10^{-5} radians when coupled with a one cm^3 CCD chip having one micron pixels arranged in a 1000×1000 pixel matrix. In one embodiment, the telephoto lens is a zoom lens, capable of adjusting the magnification and therefore allowing the system operator to selectively trade off measurement accuracy for a wider field of view.

[0018] In an embodiment, the camera **104** includes a CCD having a very fine pitch, or a comparable image capturing means, is used to gather an image, either alone or in combination with a telephoto lens. In one embodiment, to maximize the resolution, the CCD is a monochrome CCD. Color CCDs generally use tiny filters arranged in a pattern over the CCD elements, which can cause unwanted image artifacts such as color changes near sharp edges of object depending upon how the light falls onto the CCD chip. Edge artifacts are unwanted image distortions that have to potential of being misinterpreted by the computer as turbulence. In other embodiments, the system uses a 3-CCD camera **104** which divides the image into three different CCDs, for example using birefringent materials, and therefore does not induce unwanted edge artifacts.

[0019] In embodiments, the camera **104** is a digital camera, a video camera, a high-resolution CCD camera, an HD camcorder. In embodiments, to enhance the image depth and dynamic range of the captured image, the camera **104** selectively uses filters, such as a polarization filter, a neutral density filter, or a red filter to avoid backscattered blue light. In embodiments, the camera **104** additionally is an infrared camera or selectively uses an image intensifier, such as a night vision tube, allowing the system to perform better in low light situations such as dusk or night time.

[0020] In an embodiment, the camera **104** is mounted on a rotatable swivel mount that allows the camera **104** to be rotated to view different portions of the sky. In an embodiment, the camera **104** is mounted on a multi-axis gimbal, allowing it to be angularly rotated in any direction. In these embodiments, the camera **104** may be rotated or oriented in order to scan a larger area. The output from the camera **104** is synchronized with an output from a rotational encoder or other similar orientation identifying means to correlate images from the camera **104** with the orientation of the cam-

era. The motion of the camera **104** can be linked to the motion of the aircraft **102**, for example through a navigation unit such as a GPS receiver, an inertial measurement unit or IMU, or both. The IMU measures changes in camera orientation due to rotation or twisting of the aircraft **102** and can be used to maintain orientation of the camera towards a desired point in the sky. In an embodiment, the motion and orientation of the camera **104** can be measured by changes in the positions of visual features in a sequence of images, and said motion and orientation measurements can be used to digitally align, or register, images to each other as if the camera **104** were stationary. In an embodiment, the camera **104** is substantially fixed and a rotatable mirror is used to change the direction of viewing of the camera **104**. In an embodiment, the mirror is a first surface mirror for better clarity. In an embodiment, the camera **104** is mounted in a vibration reducing mount. In an embodiment, the camera **104** is gyroscopically stabilized.

Image Transformations and Scene Registration

[0021] Referring now to FIGS. **1** and **5**, the aircraft **102** in flight moves from a first position at time **t1** to a second position at time **t2**. While the aircraft **102** is moving, the camera **104** takes images of a scene having a feature, for example the horizon **108**. The computer captures the scene on the camera **104** into a series of images, for example by capturing **502** a first image **i1** at time **t1**, and capturing **504** a second image **i2** at time **t2**, where $t2 > t1$. Typically, $t2 < t1 + 1$ second, however in embodiments the interval between **t2** and **t1** can be any suitably short interval of time. An image is generally made up of an ordered matrix of pixels, for example a 12 megapixel image having a 4:3 ratio comprises a rectangular image having 4000 pixels along one axis and 3000 pixels along a second axis.

[0022] In clear air, when no turbulence **106** is present, the images will blend smoothly with each next image, with simple geometric transformations known to person skilled in the art. When turbulence **106** is present, however, some parts of the image will appear distorted, for example the distorted portions **110** of the horizon as illustrated in FIG. **1**. The distortion portions **110** will vary from image to image, whereas the rest of the horizon **108** will not vary significantly from image to image.

[0023] In a comparison between a two image, for example image **i1** at time **t1** and image **i2** at time **t2**, features such as the horizon **108** in one image can be easily registered with similar features in another image using simple geometric transformations. In one embodiment, the computer performs a transformation of a first image **i1** at time **t1** into a predicted subsequent image, and compares the predicted subsequent image with the actual subsequent image at time **t2**. In another embodiment, the computer performs a similar process but transforms the second image into a predicted first image. However, transforming the second image has the disadvantage that the system must wait until the second image is received by the computer before performing the transformation, creating a possible time lag.

[0024] In another embodiment, both a first image and a second image are transformed to a internal standard image format used by the computer before being compared. This embodiment has the advantage that each image is transformed independently of any camera **104** related artifacts of the other image and simplifying computations. For example, using an internal standard image, each image can be different in terms of angle, rotation, zooming, and aperture and then

mapped to the angle, rotation, zoom level and aperture of the internal standard image. Further, using the internal standard image simplifies comparing image from different cameras **104**, which may have different focal lengths or may look at the same scene from different angles, for example if two cameras **104** are mounted on opposite wingtips.

[0025] Depending upon the motion of the aircraft **102**, the geometric transformation may be a translation operation, a scaling operation, a rotation operation, or a projection operation to one or both of the scenes captured in the images. To perform the transformation, the computer first estimates the distance of features in the scene. For example, if the camera **104** is facing towards the horizon **108**, the distance to the horizon **108** is a simple monotonic function of the altitude of the aircraft **102**. The computer performs an estimate of the motion of the aircraft **102** including groundspeed and direction, for example by using the movement of ground features in the image. Once the computer has the distance estimates for features in the images, the computer uses the distance estimate and along with the time, t_1 and t_2 , between the images and motion information from the airplane to determine the appropriate transformation to perform to one or both images. The computer registers **506** the images by adjusting the size, position, and/or orientation of one or both of the images, for example by registering **506** image i_1 to image i_2 . In this example, image i_1 is digitally translated, scaled, rotated, and/or projected so that features in image i_1 are aligned with matching features in image i_2 , which is also called scene registration.

[0026] In an embodiment, the clear air turbulence system **100** determines the position of the aircraft **102** by comparing images of the ground with information from a geographic information system, or GIS, having a database of visual terrain characteristics. In another embodiment, the clear air turbulence system **100** determines the position of the aircraft **102** using GPS. In these embodiments, distance measurements for transforming or registering **506** an image, or even individual features within a image, can be computed with improved accuracy. In one embodiment of the clear air turbulence system **100** comprising both a GIS interface and a GPS position interface, the clear air turbulence system **100** performs scene registration of images using particular portions or features within the images.

[0027] After the registration **506** of image i_1 is performed, the clear air turbulence system **100** computes the difference **508** between registered image i_1 and image i_2 . In one embodiment, computing the difference **508** between registered image i_1 and image i_2 comprises subtracting the pixels of registered image i_1 from image i_2 , and is therefore a simple difference image. In embodiments, image i_1 and image i_2 are compared using any methodology that produces a usable difference result, including but not limited to using one or more convolution matrixes with matrix terms that would be known to one of skill in the art.

[0028] When there is a difference between registered image i_1 and image i_2 , that difference indicates changes that are unrelated to motion of the camera **104**. The changes may be due to the motion of objects in the scene, for example a moving vehicle, or due to turbulent refraction of light traveling from features in the scene to the camera **104**. In one embodiment, the clear air turbulence system **100** also performs the additional step of removing **510** foreground objects from the difference image, such as moving objects on the ground, clouds, or other aircraft in the sky.

[0029] From one or more difference images, the clear air turbulence system **100** computes **512** a turbulence indication. When there is little turbulence **106**, the difference image will contain little or no information. Difference images having information indicate a distortion or scintillation caused by the turbulence **106**. In an embodiment, to compute **512** a turbulence indication, the computer calculates a power spectral density, PSD, of a feature of an image at various angular scales. Referring now to FIG. 3, a graph illustrates the spectral content **300** of two images of the same scene, one image taken through a pocket of strong turbulence **314**, and a second image of the same scene taken through air where there is only weak turbulence **312**. The graph illustrates that the amplitude **304** for a range of spatial frequencies **302** of the image taken through strong turbulence shows a larger drop in higher frequency content than the image taken through weak turbulence **312**. The drop in higher spatial frequency contents corresponds to the blurring of edges in the image due caused by the increase amount of turbulence **106** and the increase amount of refractive distortion.

[0030] Because the distortion or scintillation vary over time, in embodiments the clear air turbulence system **100** also calculates changes to the difference images using various temporal scales to compute **512** the turbulence indication. These temporal changes are used to determine the severity and/or dynamically changing characteristics of the turbulence **106**. In an embodiment, to compute **512** a turbulence indication, the computer calculates a power spectral density, PSD, of a feature in a set of images at various temporal scales. Referring now to FIG. 4, a graph illustrates the change in temporal frequency **400** for pixels of multiple images of the same scene, one set of images taken through a pocket of strong turbulence **314**, and a second set of images of the same scene taken through air where there is only weak turbulence **312**. The graph illustrates that there is a higher spectral content in the set of images taken through a pocket of strong turbulence **314** than the set of images taken through weak turbulence. This measurable increase results from the small displacements of features and flickering caused by the increased amount of refractive distortion due to turbulence **106**. In embodiments, the clear air turbulence system **100** uses Fourier transforms, multi-scale correlation between images, measure of information entropy or other parameters to reveal angular blurring or temporal flickering.

[0031] To determine the range to the turbulence **106**, the clear air turbulence system **100** uses the rate of change of the size of the pocket of turbulence **106**. Referring now to FIG. 2, a small turbulent region **202**, turbulent region A, initially appears similar to a larger turbulent region **204**, turbulent region B. This is because both turbulent regions **202**, **204** have initially similar angular extents **216** as illustrated by dotted line. However, as the aircraft **102** moves from the first position at time t_1 to a second position at time t_2 , turbulent region A's angular extent **212**, illustrated by the solid line, will grow faster than turbulent region B's angular extent **214**, illustrated by the dashed line. The rate of change of the angular extent **212**, **214** is used to compute the distance to the turbulent region **202**, **204**. Therefore, by tracking the size of a patch of scintillation through successive images and measuring the growth of the angular extent **212**, **214**, the clear air turbulence system **100** can determine both an estimated range to the turbulent region **202**, **204** and an estimated size.

[0032] In another embodiment, the camera **104** is facing sideways, perpendicular to the moving aircraft **102**. In this

embodiment, the distance to the turbulence **106** is less than the distance to the horizon **108**. Patches of scintillation will move across the scene in fewer successive images than features on the horizon or objects on the ground behind the turbulence **106**. The turbulence will have a higher angular velocity relative to the background features that are far from the aircraft. Therefore, by tracking the angular momentum of a patch of scintillation through successive images, the clear air turbulence system **100** can determine an estimated range to the turbulence **106**. Using a combination of the forward looking camera **104** embodiment and the sideways facing camera **104** embodiment the clear air turbulence system **100** can detect turbulence **106** at various ranges and angles to the aircraft **102**.

[0033] Referring to FIG. 6, in an embodiment, distances to city skylines or even particular building features provide additional information about atmospheric distortions due to turbulence **106**. Using information from a GIS, the clear air turbulence system **100** estimates the contrast and spatial information content of a background scene. Urban and suburban neighborhoods often have high contrast and a high amount of spatial detail, for example buildings with regularly spaced windows provide information about turbulent air between the camera **104** and the buildings. Rural areas typically have less contrast and less spatial detail. GIS information allows the clear air turbulence system **100** to choose an appropriate threshold PSD for determining whether or not to report a turbulence indication. When over deserts or water, there is generally an absence of high spatial frequency components that is unrelated to turbulence. The clear air turbulence system **100** provides a warning to pilots when the background is insufficient to support effective turbulence detection.

[0034] The clear air turbulence system **100** displays the turbulence indication to the pilot of the aircraft **102**. In embodiments, the turbulence indication an audible warning alarm, a graphical representation of the turbulence, an input to an autopilot navigation system, and/or a broadcasted electronic message. In one embodiment shown in FIG. 6, the turbulence indication is used to overlay a warning graphic on top of a real time image of the air **600** in front of the aircraft **102**, for example using isobars **602** as shown in FIG. 6. In embodiments, the clear air turbulence system **100** overlays color shading or flashes an overlaid graphics that can be used to similarly warn pilots of turbulence **106**. In an embodiment, the clear air turbulence system **100** performs additional processing and provides a probability indication of turbulence **106** in addition to other warnings. In an embodiment, the clear air turbulence system **100** continuously displays the amount of computed **512** turbulence **106**, for example in the form of a heads up display for the pilot, allowing the pilot to draw her own conclusions about the presence and magnitude of turbulence **106** the aircraft **102** is approaching. In another embodiment, the clear air turbulence system **100** only displays warning graphics or issues warning messages once a threshold PSD is crossed, allowing pilots to focus on other tasks.

[0035] In an embodiment, the clear air turbulence system **100** sends the turbulence indication to a weather forecasting center. In an embodiment, the clear air turbulence system **100** shares the turbulence indication with other nearby aircraft or systems on the ground. In an embodiment, the clear air turbulence system **100** shares raw or interpreted visual data with nearby aircraft to develop a better indication of local turbulence **106**. In an embodiment, the data is shared via military

communications links, for example Link-16. In an embodiment, the turbulence indication is shared as a track of an airborne object.

[0036] The embodiments of the invention shown in the drawings and described above are exemplary of numerous embodiments that may be made within the scope of the appended claims. It is contemplated that numerous other configurations of the clear air turbulence system **100** may be created taking advantage of the disclosed approach. It is the applicant's intention that the scope of the patent issuing herefrom will be limited only by the scope of the appended claims.

What is claimed is:

1. A clear air turbulence detection system, comprising:
 - an image capturing element;
 - a lens having a focal length adapted to focus a scene onto said image capturing element such that a combination of said lens and said image capturing element are adapted to optically resolve a visual distortion of a feature in said scene due to turbulence; and
 - a processor adapted to process an image of said scene from said image capturing element, said processor adapted to compare a plurality of said images to detect a change in refraction of light received from said feature due to turbulence and produce an indication of an area of turbulence.
2. The clear air turbulence detection system of claim 1, wherein said image capturing element is a CCD camera.
3. The clear air turbulence detection system of claim 1, wherein said lens is a telephoto lens.
4. The clear air turbulence detection system of claim 1, wherein said combination of said lens and said image capturing element is adapted to have a minimum resolving capability of between approximately 10 microradians of angle and approximately 100 microradians of angle.
5. The clear air turbulence detection system of claim 1, wherein the clear air turbulence system is mounted on a moving platform and wherein said processor is further adapted to transform a scene in a first image relative to a scene in a second image such that a feature in said first image approximates a position, a size and an orientation of said feature in said second image.
6. The clear air turbulence detection system of claim 5, wherein said processor is adapted to transform said scene in said first image using a transformation selected from the group consisting of translating said scene, scaling said scene, rotating said scene, and projecting said scene.
7. The clear air turbulence detection system of claim 5, further comprising:
 - an inertial navigation device providing an orientation data of said feature; and
 - a global positioning system data providing a position of said moving platform, and
 wherein said processor is adapted to process said global positioning system data and said orientation data to query a geographic information system source for an image data of said feature, and
 - wherein said processor is adapted to compare an image of said feature captured by said image capturing element with said image data of said feature from said geographic information system source to detect a change in spatial information content of said feature due to an area of turbulence.
8. The clear air turbulence detection system of claim 1, wherein said processor detects said change in refraction of said feature due to an area of turbulence by performing a

power spectral density operation selected from the group consisting of measuring a decrease in a high spatial frequency content of a measured power spectral density of a feature of an image compared with a calculated power spectral density of said feature of said image, and an increase in a high frequency content of a measured temporal power spectral density of a feature over a plurality of images compared with a calculated power spectral density of said feature over said plurality of images.

9. The clear air turbulence detection system of claim 1, wherein said processor detects turbulence by detecting angular blurring in an image.

10. The clear air turbulence detection system of claim 1, wherein said processor detects turbulence by detecting temporal flickering between images.

11. The clear air turbulence detection system of claim 1, wherein said processor detects a range to said turbulence by tracking a size of an area of scintillation through a plurality of images to determine a rate of change in an angular extent of said area of scintillation.

12. The clear air turbulence detection system of claim 1, wherein said turbulence indication is selected from the group consisting of an audible alarm, a graphical display of said turbulence, a graphical overlay superimposed on a real-time image, an input to an autopilot navigation system, and a broadcasted electronic message.

13. A method of detecting clear air turbulence, comprising:

capturing a first image of a scene;

capturing a second image consisting essentially of said scene;

selecting a feature present in said first image and said second image;

registering said first image to said second image such that said feature in said first image has approximately a same position, scale, and orientation as said feature in said second image;

comparing said feature in said first image with said feature in said second image to determine a change to a portion of said feature between said first image and said second image; and

displaying a turbulence indication based upon said change to said feature.

14. The method of detecting clear air turbulence of claim 13, wherein said first image and second image are adapted to resolve a minimum angular resolution of approximately 10 microradians to approximately 100 microradians.

15. The method of detecting clear air turbulence of claim 13, further comprising:

removing a change to a portion of said feature caused by moving objects.

16. The method of detecting clear air turbulence of claim 13, further comprising:

detecting an angular blurring in a image; and

displaying a turbulence indication base upon said angular blurring.

17. The method of detecting clear air turbulence of claim 13, further comprising:

detecting a temporal flickering in a set of images; and

displaying a turbulence indication base upon said temporal flickering.

18. The method of detecting clear air turbulence of claim 13, wherein said change to a portion of said feature is an increase in a high temporal frequency content of a power spectrum distribution of said feature.

19. The method of detecting clear air turbulence of claim 13, further comprising:

computing a power spectral density of said feature of said second image;

computing a power spectral density of said feature of said first image; and

comparing said power spectral density of a said first image and said second image to determine said turbulence indication.

20. The method of detecting clear air turbulence of claim 13, further comprising:

receiving an orientation data of said orientation of said scene of said first image relative to said feature;

receiving a position data of a distance to said feature of said first image; and

transforming said scene of said second image to have approximately a same position, scale, and orientation as said feature in said first image.

21. The method of detecting clear air turbulence of claim 20, further comprising:

querying a geographic information service for a data correlating to said feature; and

computing said feature of said second image from the data of said geographic information service.

22. The method of detecting clear air turbulence of claim 13, wherein said displaying a turbulence indication is selected from the group consisting of playing an audible alarm, displaying a graphical display of said turbulence, superimposing a graphical overlay on a real-time image, sending a message to an autopilot navigation system, and broadcasting an electronic message.

23. An aircraft with a turbulence detection system, comprising:

a turbulence detection system, further comprising a camera system and an image processing system;

an aircraft, said aircraft adapted to mount said camera system; and

a turbulence alerting system displaced in a cockpit of said aircraft, said turbulence alerting system in electronic communication with said image processing system.

24. The aircraft of claim 23, wherein said camera system further comprises:

a CCD camera having a pixel size and focal length adapted to resolve visual distortions in a scene imaged by said CCD camera that are caused by turbulent air.

25. The aircraft of claim 24, wherein said image processing system is adapted to receive a plurality of images of said scene from said camera system, process said plurality of images, and produce an indication of turbulence.

26. The aircraft of claim 25, wherein said image processing system is adapted to select a selected image from said plurality of images, to select a reference image with which to compare said selected image, to perform a geometric image transformation selected from the group consisting of translating a scene, scaling a scene, rotating a scene, and projecting a scene, said geometric image transformation registering scenes from two different perspectives with one another, and to compare said selected image to said reference image to produce said indication of turbulence.

27. The aircraft of claim 26, wherein said reference image is selected from the group consisting of a second selected image from said plurality of images, a previously stored image of the scene, an image of the scene from a geographic

information system, and an image of a feature in the scene from a geographic information system.

28. The aircraft of claim **25**, wherein said image processing system detects a change selected from the group consisting of an angular blurring of a feature in an image, a temporal flickering of a feature in a set of images, a change in size of an area of scintillation of a feature in an image, a change in high temporal frequency content of a feature in an image, and a change in power spectral density of a feature in an image.

29. The aircraft of claim **23**, wherein said turbulence alerting system receives said indication of turbulence from said image processing system, and said turbulence alerting system is selected from the group consisting of an audible alarm, a graphical display of said turbulence, a graphical overlay superimposed on a real-time image, an input to an autopilot navigation system, and a broadcasted electronic message.

* * * * *